



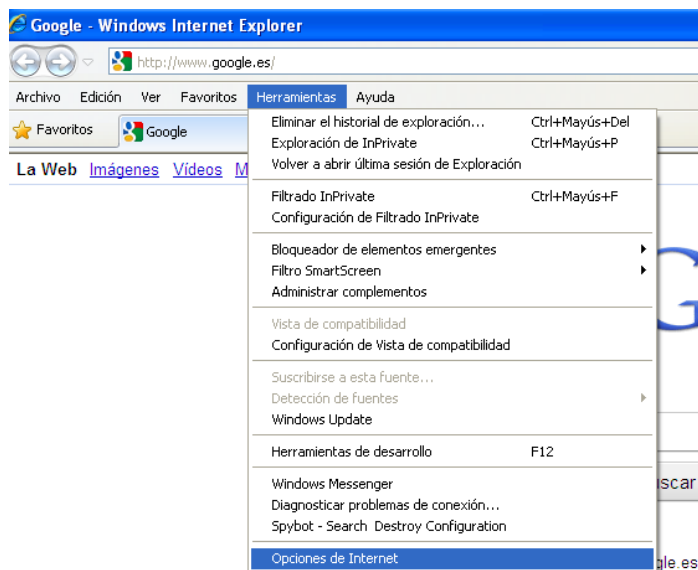
Guide

Importing Certificates from Internet Explorer

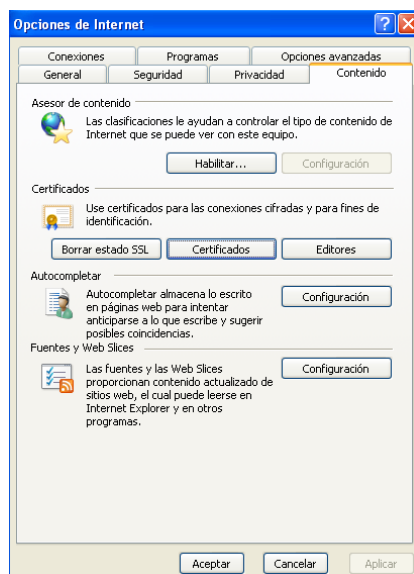
Document SIGNE_PAPET. Ver. 1.0
Date of application 06/08/2012

Import a software-based certificate

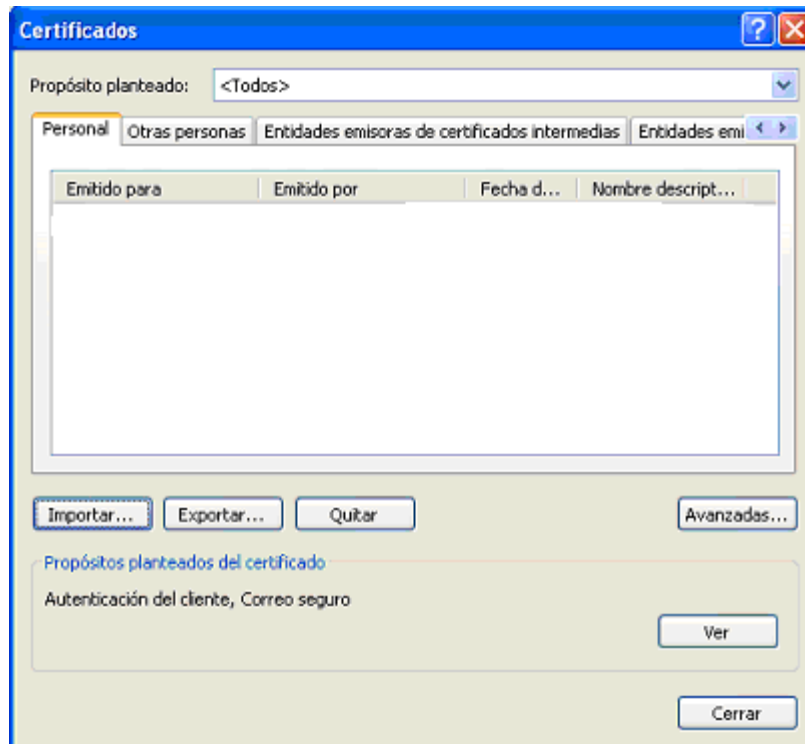
This document describes the steps for importing digital certificates into the Microsoft Internet Explorer browser. Open Internet Explorer. Click on the “Tools” menu and then “Internet Options”.



In the next window, click the “Content” tab, and then the “Certificates” button.



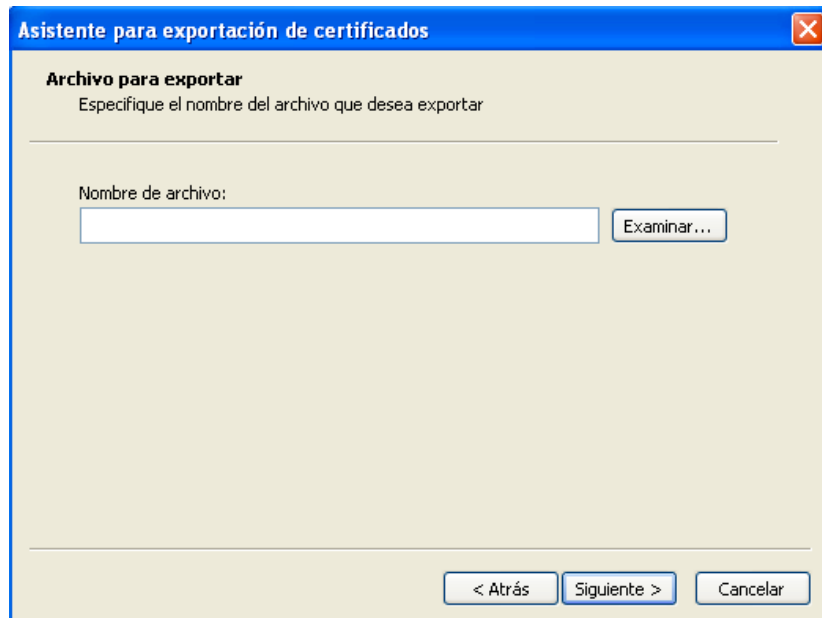
To import the Certificate, click Import. The import wizard will open. Click Next.



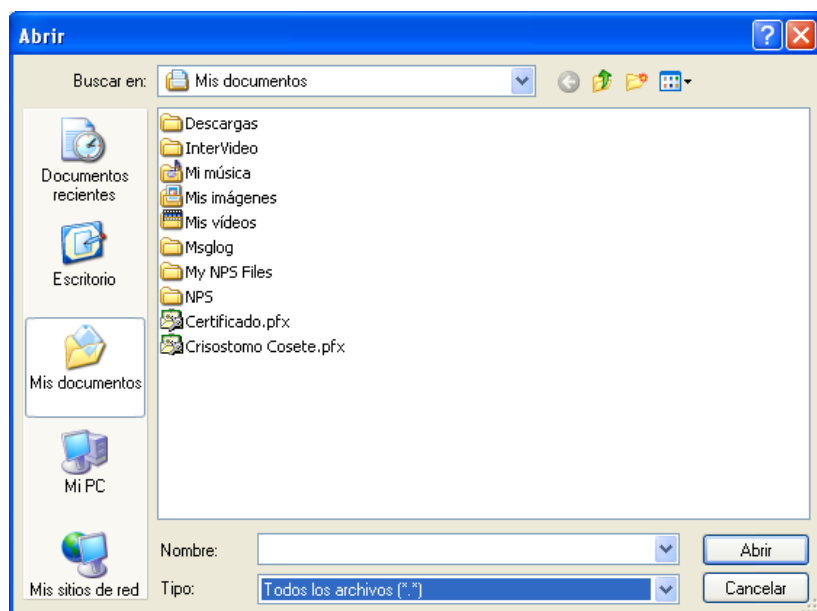
The import wizard will open. Click Next.



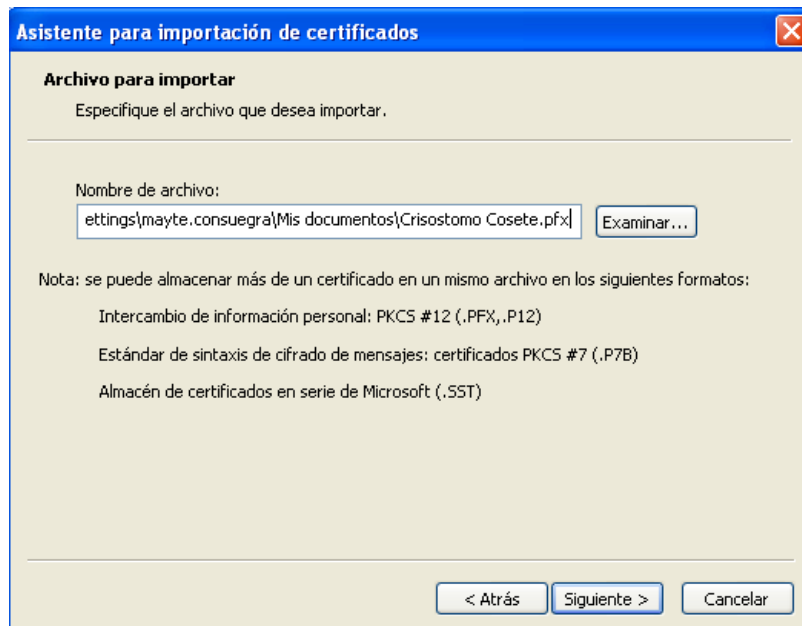
Click “Browse” to browse to the location of the file that contains the copy of the digital certificate.



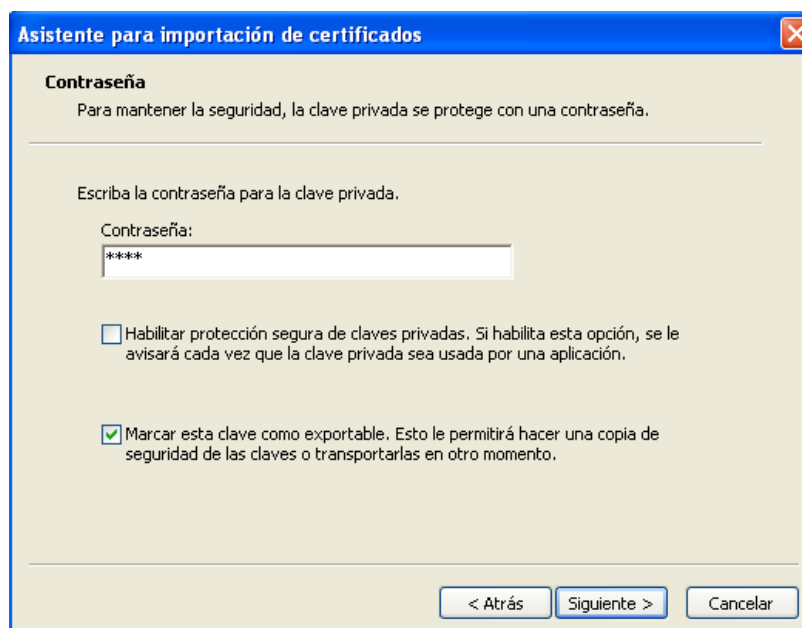
In the Type box at the bottom, select the option All Files (*.*) option because the file may have different extensions. Select the file and click Open.



After you select the file, click Next.



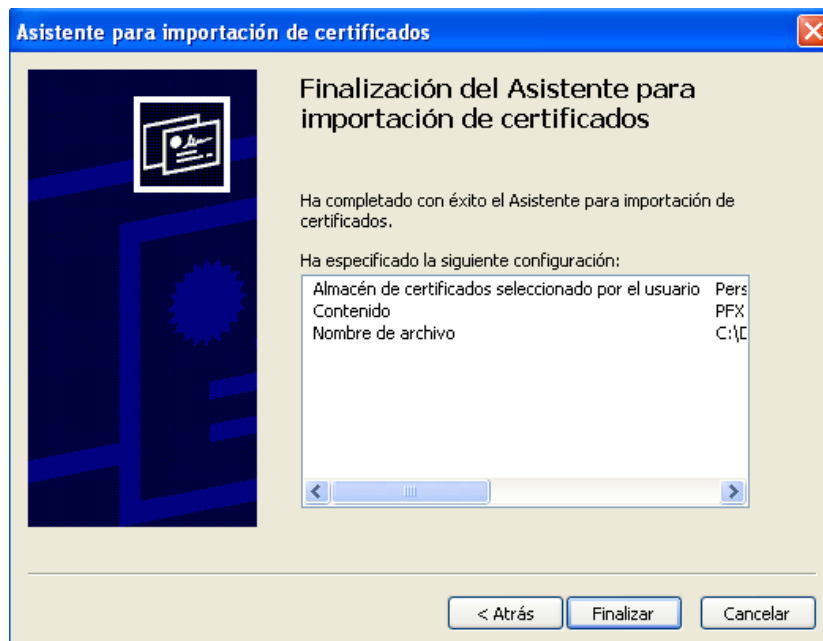
Enter the file password and select the “Mark this key as exportable” box. This option will allow you to sign documents.

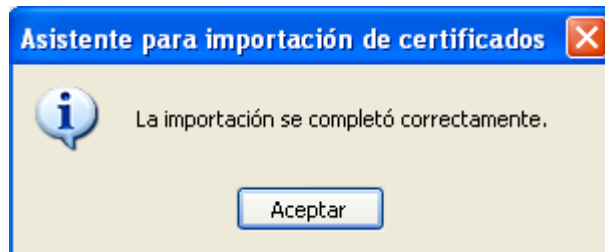


In this window, click Next, and then in the next window, the Personal certificate store.



To finish importing the Certificate, click Finish.





If everything was successful, the installed Digital Certificate should appear in the list.

